

The heart of your building™



MODULAR MODERNIZATION SOLUTIONS

# KONE Electrification Solutions



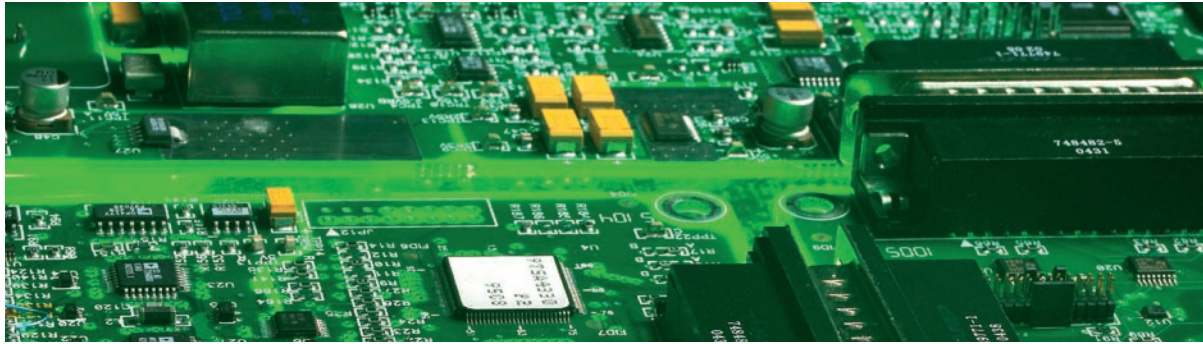
# Value for your building

The purpose of KONE modernization solutions is quite simple: to increase the value of your building and the safety of people in it, by keeping the elevators and escalators running safely and reliably for the lifetime of your building. Take care of the safety of the people in your building by taking care of the technology in your elevator.

KONE, a world leader in people-flow management, has created an impressive portfolio of modernization tools and processes. With the KONE Care for Life™

service, KONE conducts a full analysis of your current installation and prepares a modernization plan to raise the elevator to modern standards of performance, safety, aesthetics and accessibility.

To suit the modernization needs identified by the KONE Care for Life™ service, KONE can offer modernization solutions ranging from individual elevator parts, to modernization packages, to full replacement solutions.



# The value of reliability

Malfunctions in old elevators often result from worn-out electrical components. Especially electro-mechanical components, such as relays and contactors, have a limited lifetime. The best way to increase the performance and reliability of an old elevator is to modernize its electrification system.

Modernizing the electrification system also eliminates potential safety hazards. In recent years, safety norms have developed to such an extent that solutions that met the norms when the elevator was new are now considered to be safety risks. One clearly visible result is improved floor leveling, which increases the safety, accessibility and comfort of passengers.

KONE modular electrification solutions cover the whole range of elevators. The same reliable core technology platform can be tailored to provide the right solution for both hydraulic elevators and traction elevators, from low-rise residential buildings to high-rise office blocks. The KONE modular electrification solution can be combined with other KONE modular modernization solutions, such as doors, signalization and hoists, to create the most suitable modernization solution.

KONE ReSolve™ solutions replace the large numbers of relays in the existing installation with microprocessor control and simple yet safe main power circuits.

The serial transmission technology of KONE ReSolve™ solutions results in significantly fewer wires in the elevator shaft, further improving the reliability of the equipment.

KONE ReSolve™ solutions for traction elevators are equipped with a Variable Voltage and Variable Frequency (V3F) drive system. This system helps reduce power consumption, achieves smooth ride comfort, and provides accurate and consistent floor leveling. For more demanding applications, with higher speeds and heavier loads, the elevator positioning system is equipped with a real-time position feedback device that further improves performance.

KONE ReSolve™ solutions for multi-elevator group installations come with an advanced call allocation system, which improves the traffic handling capacity and results in shorter waiting times for passengers.

KONE ReSolve™ solutions are installed using a comprehensive installation method that provides the shortest possible downtime without compromising safety.

KONE is a global leader in providing complete and innovative solutions for the design, installation, modernization and maintenance of elevators and escalators and the maintenance of automatic building doors. Our 29,000 dedicated employees serve you in 49 countries.

KONE cooperates closely with you from the earliest stages of a project in order to ensure the smooth flow of people and goods throughout your facilities for their entire lifetime. Life-cycle thinking underlies our commitment to proactive, reliable service and modernization solutions. KONE serves you locally as well as globally, for example in the Trump Tower in Chicago, Swiss Re in London and Beijing International Airport.

KONE Corporation  
**[www.kone.com](http://www.kone.com)**