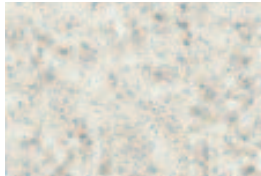


Dedicated to People Flow™



COLOR FINISHES



4757-60*
Mystique Moonlight



4638-60*
Monterey Sun



ES2002T**
Honeytone Essence



4744-60*
Karratha Brush



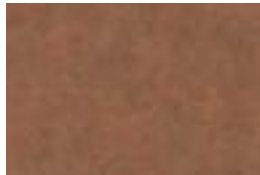
4669-60*
Natural Tigris



WZ1001T**
Red Dragon Bamboo



4573-07*
Mesa Verte



4798-60*
Burnished Ember



4813-60*
Nickel Ev



4746-60*
Woolamai



4623-60*
Graphite Nebula

WOOD FINISHES



7850-60*
Beigewood



10776-60*
Kensington Maple



7062-60*
Congo Spruce



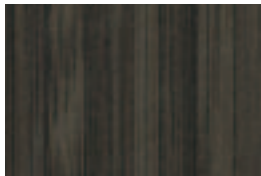
7919-38*
Amber Cherry



7054-60*
Wild Cherry



7039-60*
Windsor Mahogany



7949-38*
Asian Night



7040A-60*
Figured Mahogany

Laminate Brands

* Wilson Art

** Nevamar

PLASTIC LAMINATES FOR EcoSpace™, MonoSpace®, EcoSystem MR™ AND MIX & MATCH

WALL PANEL SELECTIONS

METAL FINISHES



6258*
Satin Brushed Gold



6313*
Bronze Stria



6262*
Satin Brushed Med. Bronze



6312*
Mercury Stria



6261*
Satin Brushed Light Bronze

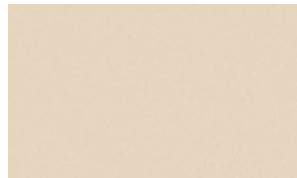


6277*
Alumasteel

PEARLESCENT FINISHES

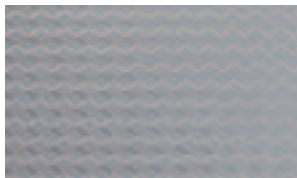


D487-07*
Pearl Silver LS



D485-07*
Pearl Bisque LS

VANDAL RESISTANT FINISHES



Scottish Quad Rigidized
Stainless Steel

Samples shown are photo representations of the colors, wood grains and patterns available. Actual colors may vary from displayed or printed images. Images are not shown at actual size.

Additional solid color, wood grain and patterns are available. Such selections are subject to standard commercial availability and may affect manufacturing lead-time. Please consult your KONE Sales Professional for more information.

Laminate Brands
* Wilson Art
** Nevamar



U.S. Operations Center
One KONE Court
Moline, Illinois 61265
1-800-956-KONE (5663)

Canadian Operations Centre
6696 Financial Drive, Unit 2
Mississauga, Ontario L5N 7J6
1-905-858-8383

KONE Mexico, S.A. de C.V.
Clavel 227
Colonia Atlampa
Mexico City, D.F. 06450
+52.55.1946.0100

For the latest product information and interactive design tools, visit www.us.kone.com

KONE Inc. reserves the right to alter design and specifications without prior notice.

KONE and MonoSpace are registered trademarks of KONE Inc.

Dedicated to People Flow, EcoSpace and EcoSystem MR are trademarks of KONE Inc.

"USGBC" and related logo is a trademark owned by the U.S. Green Building Council and is used by permission.



©2011 KONE Inc.
SF2819 Rev 0911
Printed in U.S.A.

This document is printed using soy-based inks.