

Dedicated to People Flow™



KONE TransitMaster™ 155/195

RELIABILITY IN TRANSIT

Autowalks are a proven solution in guiding passengers through a building. They offer comfort and ease while at the same time speeding the movement of masses.

They are built to operate under constant pressure and huge masses of people in a hurry. This makes reliability a must. With the industry's leading drive and chain technology KONE TransitMaster™ 155/195 autowalk can be optimised from long operating hours and heavy traffic flow to continuous use in mass transit.

Safety is equally important, especially for children, the elderly and the infirm. KONE has an excellent track record and reputation in safety and solutions that are among the most energy efficient in the industry.

For the masses on the move

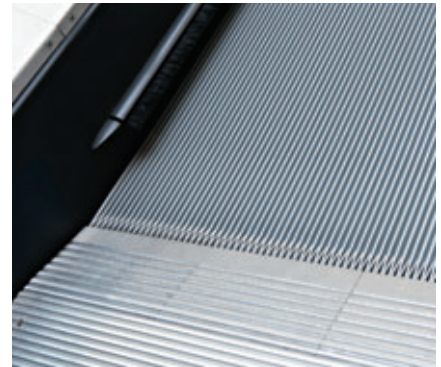


Lifetime and load profile you need

- KONE TransitMaster™ 155/195 autowalk offers a durable solution with a customer preferred lifetime. Choice between different chain types allows increase in capacity and availability
- The timeless design complements the architecture of any building and flexibility in length allows an easy match to most locations
- The reliability comes hand-in-hand with a synchronized handrail speed to maximize safety
- Maximum availability can be achieved through advanced control system and both fast and effective troubleshooting through built-in diagnostics



Trolley protection



Skirt brush



ECO3000 Drive

List of available options include

- Lubrication free chain
- Outdoor features
- Halogen free wiring
- Seismic support
- Stand-by operation
- Continuous handrail lighting
- Comb lights
- Demarcation lights
- Traffic lights
- Diagnostic display
- Remote monitoring
- Phase failure device
- Inching device
- Numerous safety features

Ecologically designed for efficiency

- Environmental thinking and fire safety with the optional lubrication-free chain
- KONE expertise to ensure a lifetime of reliable performance
- The industry's longest oil change intervals and best drive technology



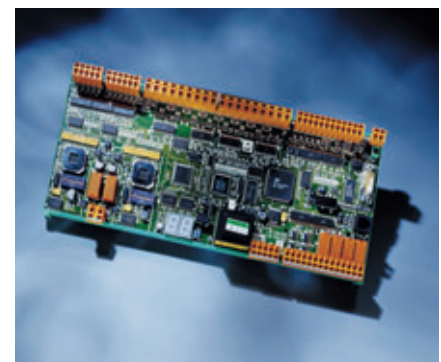
Lubrication free chain

Uncompromising reliability

- Elegant and durable solid balustrade or stainless steel newel ends for increased lifetime and style in demanding conditions
- Outdoor operation, even in compromising conditions, through optional hot-dip galvanisation
- Optional remote monitoring and diagnostics with real time response to possible problems

Future-proof investment

- KONE's focus on low lifecycle costs and modernization possibilities ensure a sound return on investment
- KONE is your global partner and can offer 24-hour call centers and matching spare parts availability



Controller chip

KONE TransitMaster™ 155/195 Basic Characteristics

Environment	Indoor, semi-outdoor, outdoor
Inclination	0-6°
Recommended duty cycle	Up to 24 h/day
Maximum length	250 m
Pallet width	1000 mm/1200 mm/1400 mm
Speed	0.5 m/s / 0.65 m/s
Balustrade	- Glass with or without handrail lighting profile - Vertical stainless steel panels sandwich in place of glass - Solid inclined balustrade
Handrail	C- / V-handrail
Pallet chain type	Rollers inside chain (Ø 75x23.5 mm) Rollers outside chain (Ø 100x25 mm)
Codes	EN and ANSI

Dimensions

Type	Pallet width		
	1000	1200	1400
Pallet width (A)	1002	1200	1398
Handrail width (B)	1340	1538	1736
Truss width (C)	1560	1758	1956
Pit width (D)	1660	1858	2056

All dimensions in millimetres

General arrangement

