

Dedicated to People Flow™



OPTIONS AND PLANNING DIMENSIONS

KONE TransitMaster™ 155/195 horizontal autowalk

KONE EcoMaster™ and TransitMaster product range

Well designed and manufactured escalators are a must for today's highly demanding public areas. They are key to ensuring the smooth, efficient and safe flow of people traveling within a building's environment.

KONE prides itself on delivering the 'low risk' option to customers. We offer 'peace of mind' in terms of product design, customer support and project management, combined with the highest levels of efficiency and safety during the installation phase.

The versatile EcoMaster/TransitMaster escalator range is ideal for new installations whilst also providing one of the best small footprint options for customers looking for a replacement escalator solution.

The EcoMaster/TransitMaster product range incorporates five specific models:

- **EcoMaster 130 escalator**
- **EcoMaster 135 inclined autowalk**
- **TransitMaster 150 escalator**
- **TransitMaster 180 escalator**
- **TransitMaster 155/195 horizontal autowalk**

Each one is specifically designed to meet the exact demands and needs of the market sector, whether it's a low rise retail escalator you are looking for, or a mass transit airport or railway station system.

TransitMaster™ 155/195

– ideal solutions for managing People Flow™ in airports

The KONE TransitMaster 155/195 is a horizontal autowalk primarily targeted towards the infrastructure segment. This segment covers airports, railways as well as stadiums and other transit centers. In this segment, horizontal autowalks are mostly used in airports and in two arrangements. The first ones are shorter units (e.g. TM155) to move passengers from gate to gate or within a terminal. The second ones are longer units (e.g. TM195) to move passengers from one terminal to another.

In these applications, TransitMaster 155/195 is part of the total KONE solution offering together with other KONE products such as:

- Commercial escalators ----- e.g. KONE TravelMaster 110, KONE EcoMaster 130
- Heavy-duty escalators----- e.g. KONE TransitMaster 120,140,150 and 180
- Commercial inclined autowalks -- e.g. KONE TravelMaster 115, KONE EcoMaster 135
- Passenger elevators----- e.g. KONE MonoSpace
- Goods elevators ----- e.g. KONE TranSys
- Scenic elevators ----- based on KONE MonoSpace or KONE MonoSpace Special
- Automatic building doors

It is designed, from both a technical and visual point of view, to fulfill the main customer requirements of the target segments:

- Safety and reliability
- Optimized total cost of ownership
- High quality in terms of technical performance and visual appearance
- Flexible offering to cover the wide needs of the segment
- Elegant and modern design

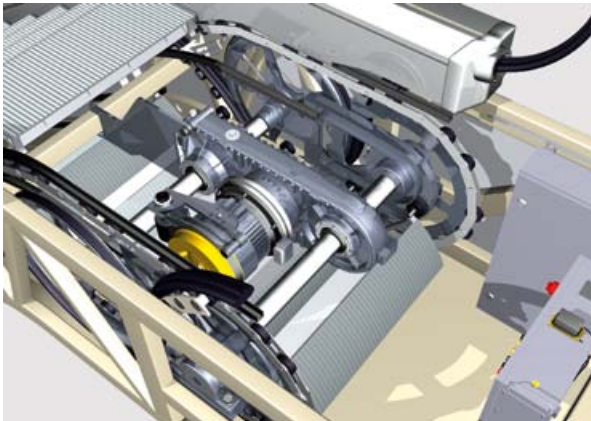
Overview of technical specifications

KONE TransitMaster 155/195 basic data		
	TransitMaster 155	TransitMaster 195
Inclination	Maximum 6°	Maximum 6°
Maximum length	100 m	250 m
Operational environment	Indoor, semi-outdoor	Indoor, semi-outdoor, full-outdoor
Pallet width	1000 mm, 1200 mm, 1400 mm	1000 mm, 1200 mm, 1400 mm
Balustrade type	Glass, sandwich panels	Glass, sandwich panels, solid inclined
Balustrade height	1000 mm	1000 mm
Handrail type	C-type	C- and V-type
Speed	0.5 m/s, 0.6 m/s, 0.75 m/s	0.5 m/s, 0.6 m/s, 0.75 m/s
Step chains	Inside roller chains	Outside roller chains
Duty cycle	Up to 20 hours/day	Up to 24 hours/day
Typical service life	100,000 hours	200,000 hours

Eco-efficiency

KONE firmly believes that sustainable buildings are our future. We are committed to helping customers achieve their environmental objectives by providing environmentally responsible products and services.

- The patented KONE ECO3000® drive is chainless (even for the handrail) and utilizes a 96% efficient planetary reduction gear, thereby improving operating efficiency, which in turn reduces energy consumption and environmental impact.



The heart of the autowalk is the innovative KONE ECO3000 drive, which provides increased reliability, reduced energy consumption, extended service intervals and a longer operating life.

- The KONE ECO3000 drive conserves energy by adjusting voltage and current up to 120 times per second in response to the autowalks workload. This increases equipment lifetime and can reduce energy consumption by up to 30%.
- Stand-by speed operation reduces the autowalk's speed when no passengers are traveling, thus further reducing energy consumption and increasing equipment lifetime.
- The KONE ECO3000 drive only requires an oil change after 30,000 operating hours (twice as long as conventional drive systems). This reduces downtime and oil disposal costs, and increases availability. And compared to conventional drives, oil leaks and their associated smells belong to the past.
- The possibility for a lubrication-free pallet chain means no oil, a cleaner autowalk and environment, reduced fire hazard, simpler cleaning and easier maintenance.
- Optional LED decorative lighting systems use 90% less energy and last up to 6 times longer than fluorescent tubes.
- Autowalk packaging and timber protection are examples of our commitment to using wood taken from sustainable forests.
- At the end of March 2008, 90% of our production operations were certified according to the ISO 14001 standard.

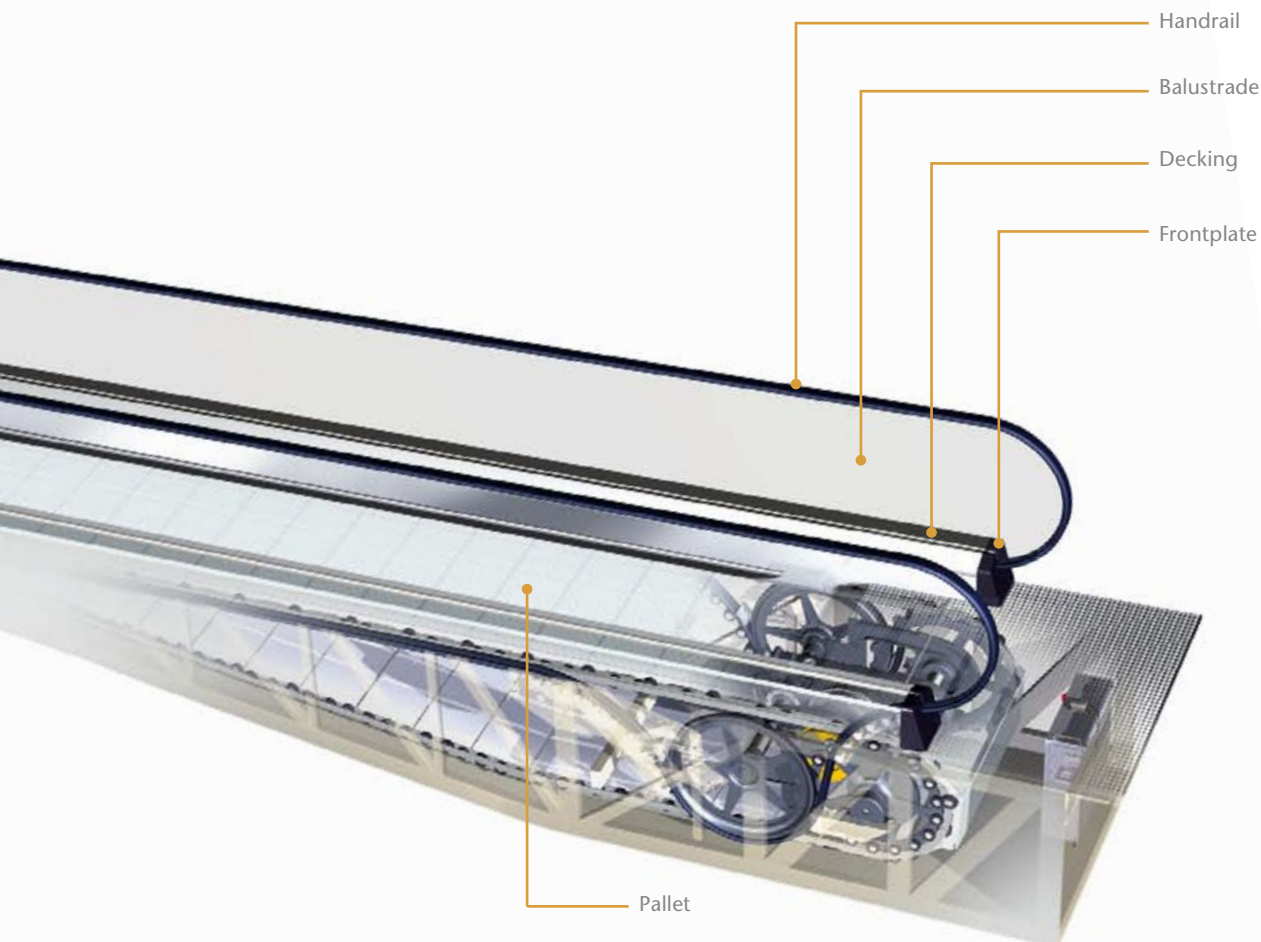


Safety options



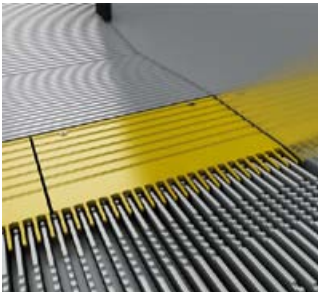


The standard safety features of the KONE TransitMaster 155/195 according to the EN 115-1:2008 safety code are the following:

- Emergency stop buttons for passengers are available at each end of the autowalk
- Broken pallet chain (chain tension) switches in the return station which stop the autowalk in case of failure of the pallet chain
- Handrail inlet switches with contacts at the handrail inlets into the balustrade heads
- Comb plate impact device switches which stop the autowalk in case objects become trapped between the comb teeth and the moving pallet band
- Pallet sag switches, which stop the autowalk if a pallet sags by more than 5 mm before it enters the comb
- Pallet band locking device
- Speed sensor system, which electronically monitors the motor for over/under speeds and pallet band reversal
- Motor thermal protection for temperature monitoring
- Main switch with thermal and magnetic release
- Stop switches for engineers' use within upper and lower end pits
- Sockets for inspection use installed in the upper and lower machine compartments
- Access cover contacts
- Handrail speed monitor
- Missing pallet monitor


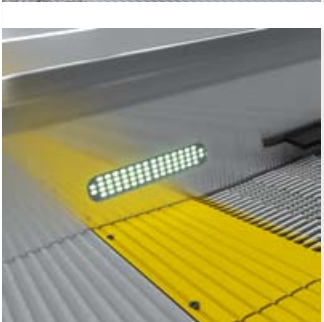


Other safety and monitoring functions, such as KONE Remote Monitoring and E-link, are available at request.



Visual options

KONE TransitMaster 155/195 visual options			
Item	Standard	Option	
 <p>Access cover</p>	<ul style="list-style-type: none"> Ribbed natural aluminium 	<ul style="list-style-type: none"> Black painted ribbed aluminium with natural tread surface Stainless steel 	
 <p>Balustrade</p>	<ul style="list-style-type: none"> Glass balustrade 	<ul style="list-style-type: none"> Stainless steel sandwich panels Solid inclined balustrade (TM195 only) 	
 <p>Comb segments</p>	<ul style="list-style-type: none"> Aluminium 	<ul style="list-style-type: none"> Aluminium with yellow powder coating 	
 <p>Decking</p>	<ul style="list-style-type: none"> Aluminium 	<ul style="list-style-type: none"> Stainless steel Intermediate decking for parallel units 	
 <p>Front plate</p>	<ul style="list-style-type: none"> Black plastic 	<ul style="list-style-type: none"> Stainless steel 	

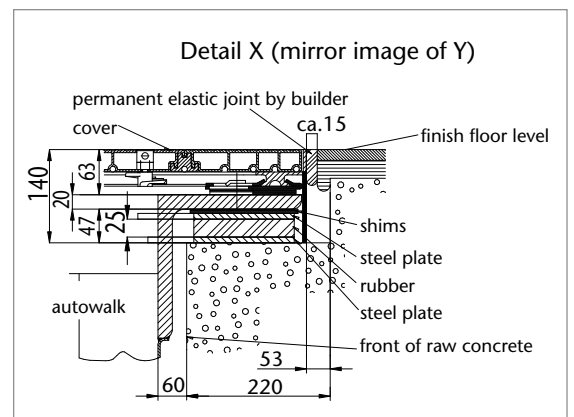
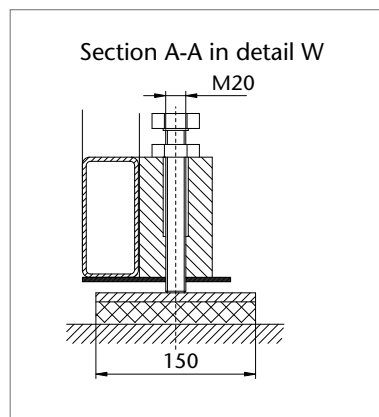
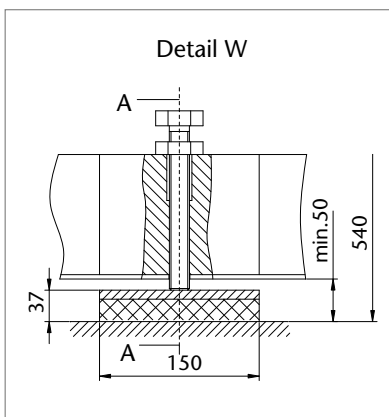
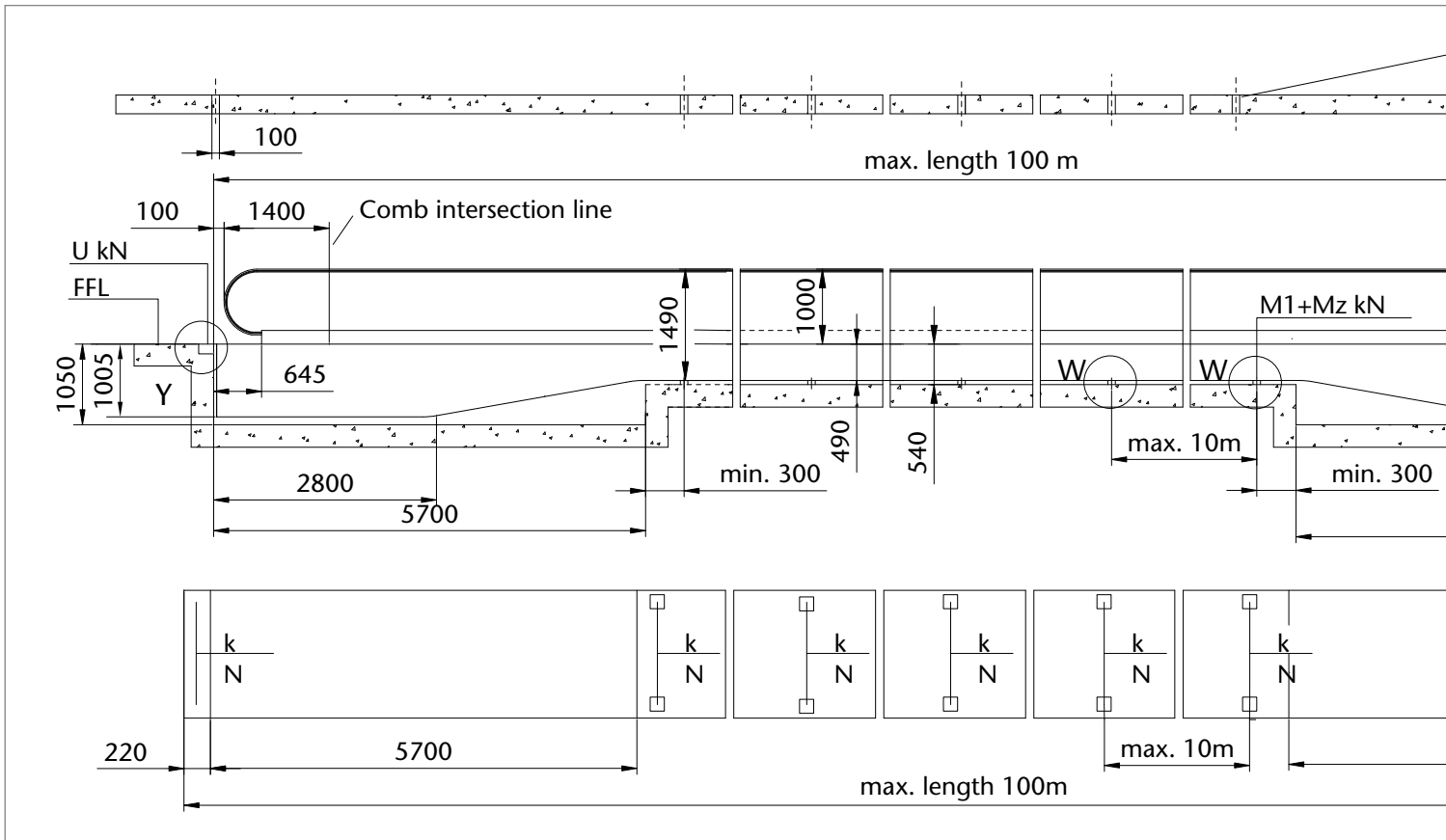
KONE TransitMaster 155/195 visual options

	Item	Standard	Option
	Handrail	<ul style="list-style-type: none"> • Black 	<ul style="list-style-type: none"> • Black with demarcation spots or special color which is the same as all other KONE escalator and autowalk solutions
	Lighting	<ul style="list-style-type: none"> • None 	<ul style="list-style-type: none"> • Continuous white LED handrail lighting • LED spot skirt lighting • LED comb lights • Under pallet demarcation lights • Traffic light
	Pallet	<ul style="list-style-type: none"> • Powder coated silver 	<ul style="list-style-type: none"> • Black powder coated pallets with natural aluminium tread surface
	Skirting	<ul style="list-style-type: none"> • Brushed stainless steel 	<ul style="list-style-type: none"> • Flat steel sheet with black anti-friction coating

KONE TransitMaster™ 155 planning dimensions

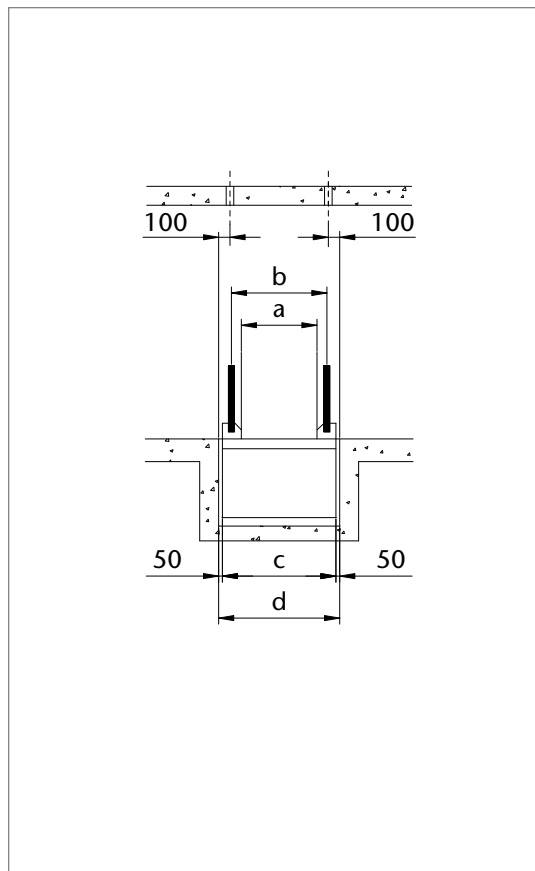
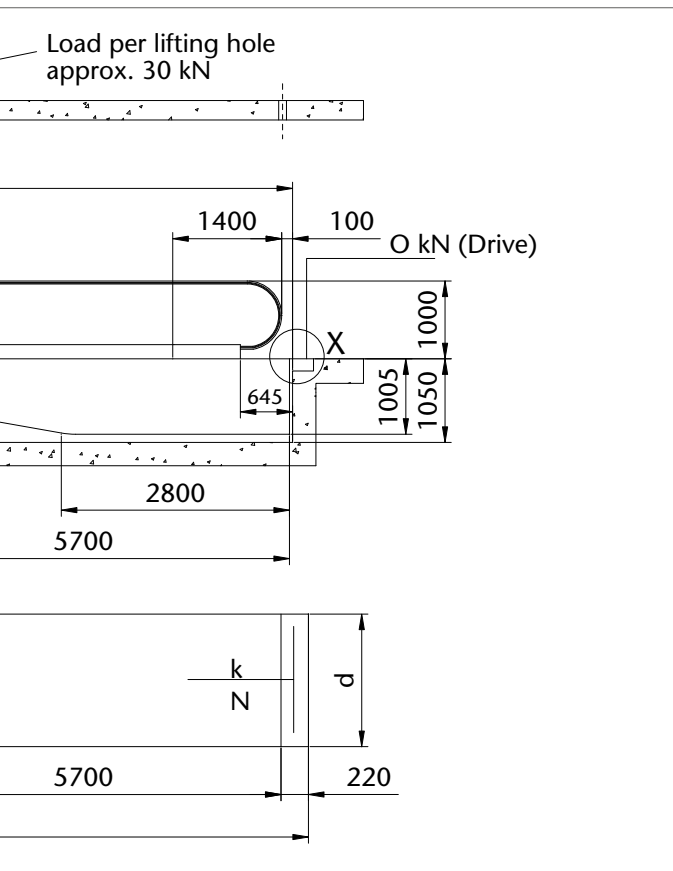
Architectural planning data

Code: EN 115-1:2008



Loading information without accounting for possible support sinking

Pallet width	800 mm				1000 mm				1200 mm				1400 mm			
	O	M1 - Mz	U	DW	O	M1 - Mz	U	DW	O	M1 - Mz	U	DW	O	M1 - Mz	U	DW
Distance between supports in middle section	kN	kN	kN	kg/m	kN	kN	kN	kg/m	kN	kN	kN	kg/m	kN	kN	kN	kg/m
6.0 m	38.0	74.5	33.0	515	41.5	84.5	36.5	540	46.0	95.5	41.0	570	50.0	106.5	45.5	620
10.0 m	36.0	103	31.0	515	40.0	118.0	35.0	540	44.5	133.5	39.5	570	49.0	149.0	44.0	620
a	804				1002				1200				1398			
b	1064				1262				1460				1658			
c	1302				1500				1698				1896			
d	1402				1600				1798				1996			



Installation notes

- All dimensions are in millimeters.
- The floor opening dimensions shown are clear plumb line dimensions between supports.
- The figures shown for the support loads include the dead weight of the autowalk and the live passenger load (500 kg/m²).
- Electrical connection required at the drive end. Voltage: 400 Volt 50 Hz 3-phase+neutral+earth.
- Load per lifting hole or lifting eye depending on length of sections = 30-40 kN.
- An access opening 2.50 m wide and 2.50 m high into and through the building is required for installation.

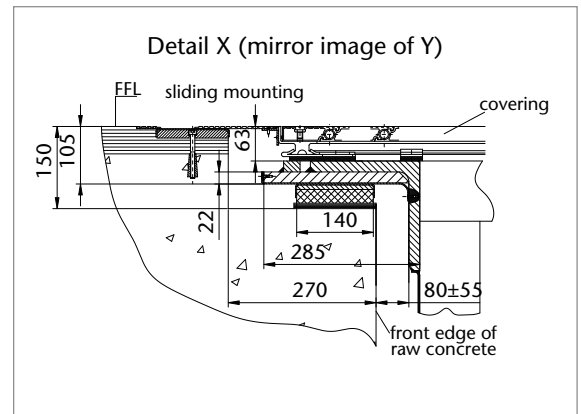
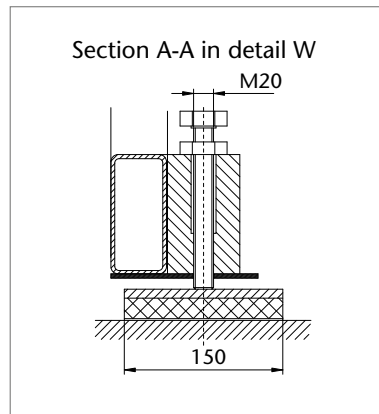
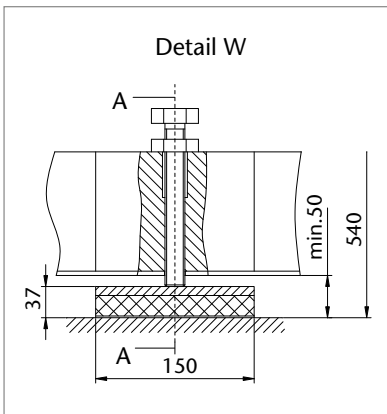
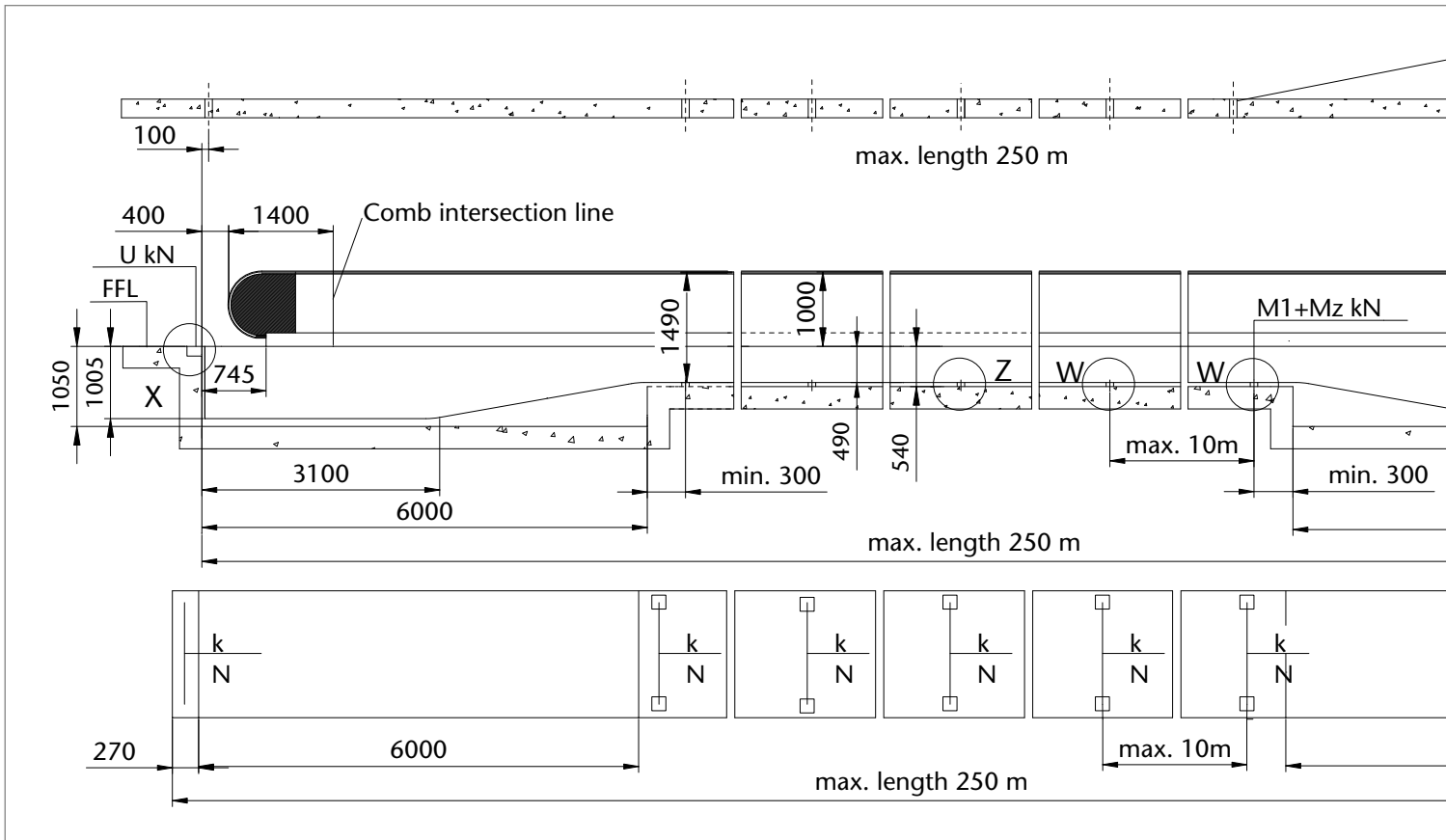
Note:

If you would like to obtain the exact dimensions for your specific project, we recommend you to contact your local KONE sales representative.

KONE TransitMaster™ 195 planning dimensions

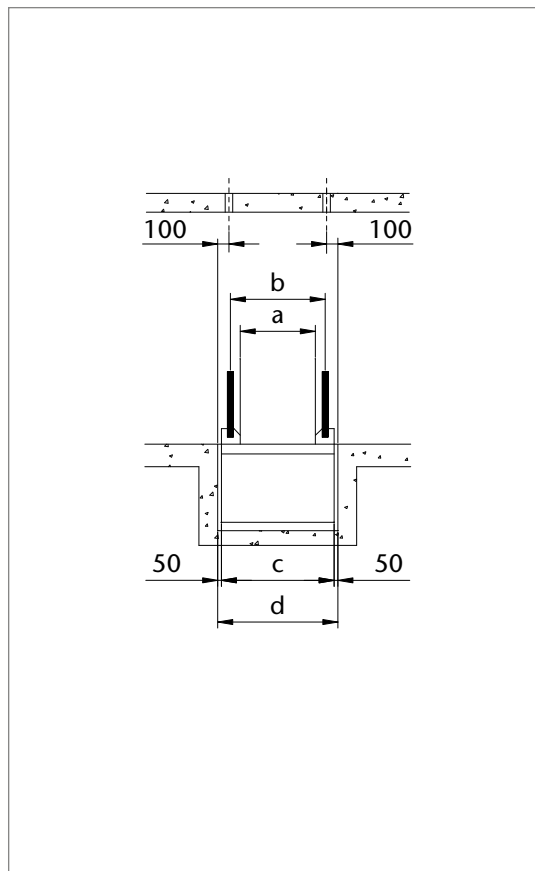
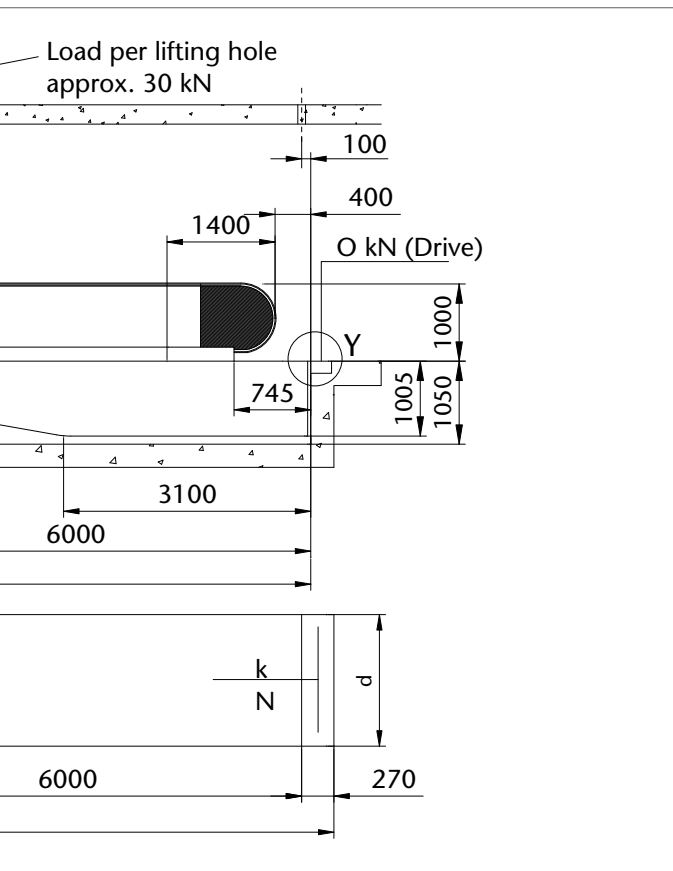
Architectural planning data

Code: EN 115-1:2008



Loading information without accounting for possible support sinking

Pallet width	800 mm				1000 mm				1200 mm				1400 mm			
	O	M1 - Mz	U	DW	O	M1 - Mz	U	DW	O	M1 - Mz	U	DW	O	M1 - Mz	U	DW
Distance between supports in middle section	kN	kN	kN	kg/m	kN	kN	kN	kg/m	kN	kN	kN	kg/m	kN	kN	kN	kg/m
6.0 m	38.0	74.5	33.0	515	41.5	84.5	36.5	540	46.0	95.5	41.0	570	50.0	106.5	45.5	620
10.0 m	36.0	103	31.0	515	40.0	118.0	35.0	540	44.5	133.5	39.5	570	49.0	149.0	44.0	620
a	804				1002				1200				1398			
b	1142				1340				1538				1736			
c	1362				1560				1758				1956			
d	1462				1660				1858				2056			



Installation notes

- All dimensions are in millimeters.
- The floor opening dimensions shown are clear plumb line dimensions between supports.
- The figures shown for the support loads include the dead weight of the autowalk and the live passenger load (500 kg/m²).
- Electrical connection required at the drive end.
Voltage: 400 Volt 50 Hz 3-phase+neutral+earth.
- Load per lifting hole or lifting eye depending on length of sections = 30-40 kN.
- An access opening 2.50 m wide and 2.50 m high into and through the building is required for installation.

Note:

If you would like to obtain the exact dimensions for your specific project, we recommend you to contact your local KONE sales representative.



KONE provides innovative and eco-efficient solutions for elevators, escalators and automatic building doors. We support our customers every step of the way; from design, manufacturing and installation to maintenance and modernization. KONE is a global leader in helping our customers manage the smooth flow of people and goods throughout their buildings.

Our commitment to customers is present in all KONE solutions. This makes us a reliable partner throughout the life-cycle of the building. We challenge the conventional wisdom of the industry. We are fast, flexible, and we have a well-deserved reputation as a technology leader, with such innovations as KONE MonoSpace®, KONE MaxiSpace™, and KONE InnoTrack™. You can experience these innovations in architectural landmarks such as the Trump Tower in Chicago, the 30 St Mary Axe building in London, the Schiphol Airport in Amsterdam and the Beijing National Grand Theatre in China.

KONE employs over 34,000 dedicated experts to serve you globally and locally in over 50 countries.

KONE Corporation
www.kone.com

This publication is for general informational purposes only and we reserve the right at any time to alter the product design and specifications. No statement contained in this publication shall be construed as a warranty or condition, express or implied, as to any product, its fitness for any particular purpose, merchantability, quality or shall be interpreted as a term or condition of any purchase agreement for the products or services contained in this publication. Minor differences between printed and actual colors may exist. KONE®, Dedicated to People Flow™, KONE MonoSpace®, KONE MiniSpace™, KONE EcoDisc®, KONE Alta™, KONE MaxiSpace™, KONE InnoTrack™, KONE EcoMaster™, KONE MovingMedia™, are trademarks or registered trademarks of KONE Corporation. Copyright © 2009 KONE Corporation.