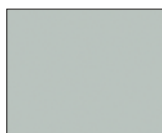


# Walls and doors

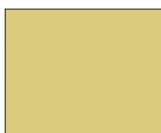


## WALLS

### PAINTING



Dolphin grey  
PP1  
RAL 7035



Pear Yellow  
PP2  
RAL 1014



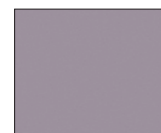
Pale Green  
PP6  
RAL 6021



Pigeon Blue  
PP7  
RAL 5014



Red Violet  
PP8  
RAL 4002



Platinum Grey  
PP9  
RAL 7036



Pure White  
PP10  
RAL 9010

### PVC-COATED STEELS



Light maple,  
wood pattern  
FB0501-3C



Brown cherry,  
wood pattern  
FA0601-1



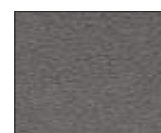
Red cherry,  
wood pattern  
FA1109-1



Jade green  
FM301-7



Cream white  
FM110-77



Warm grey  
FM801-28

### DECORATIVE PATTERNS/TEXTURES



Dark brown  
pattern  
EL038



Deep red  
pattern  
EL039



Pink  
pattern  
EL060



Purple  
pattern  
EL059



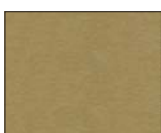
Dark metal  
texture  
EL049



Deep grey  
fabric  
EL053



Purple fabric  
EL054



Gold fabric  
EL055



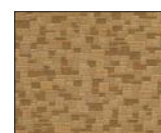
Jade green  
mosaic  
DM025



Sky blue mosaic  
DM023

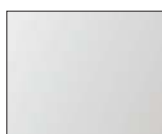


Gold mosaic  
DM024



Copper mosaic  
DM026

### ST STEEL



Silver brushed  
st steel  
ST1



Golden brushed  
st steel  
ST2



Silver mirror  
polished st steel  
MP1



Golden mirror  
polished st steel  
MP2



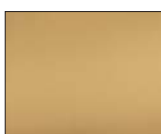
Copper toned  
mirror polished  
MP3



Dark Red toned  
mirror polished  
MP4



Dark metal toned  
mirror polished  
MP5



Satin finished  
st steel  
HM-C

The range of interior materials available varies depending on the elevator platform. Please check with your KONE sales representative.

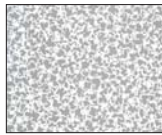
# WALLS



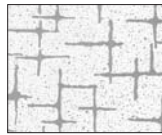
## ETCHED ST STEEL



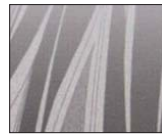
ST-9



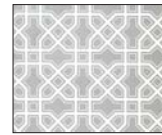
ST-10



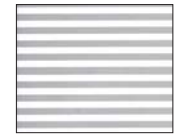
ST-11



HMK18



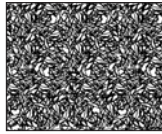
HM-36



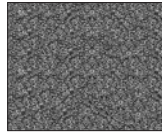
HM81h



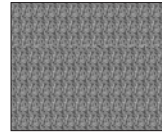
HQ-16 FLECKY



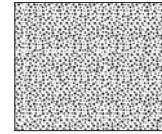
HQ-17 GRASS



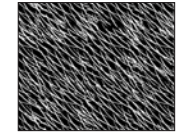
HQ-18 SPOTTY



HQ-08 PLANT



HS-GY044 DOT



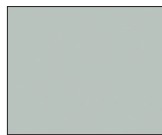
HS-GY062 Wind

## DOORS

### LANDING DOORS / PAINTING



Pear yellow  
Car door  
RAL 1014



Dolphin Grey  
Car door  
RAL 7035



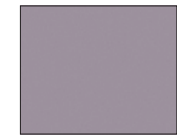
Pale Green  
RAL 6021



Pigeon Blue  
RAL 5014



Red Violet  
RAL 4002



Platinum Grey  
RAL 7036

### LANDING AND CAR DOORS / STAINLESS STEEL



Silver brushed  
st. steel  
ST1



Golden brushed  
st. steel  
ST2



Silver mirror  
polished st. steel  
MP1



Golden mirror  
polished st. steel  
MP2

### LANDING AND CAR DOORS / ETCHED STAINLESS STEEL



ST-9



ST-10



ST-11



HM-36



HM-81h



HMK-18

The range of interior materials available varies depending on the elevator platform. Please check with your KONE sales representative.

# Floors



## PVC



Redbud, marble pattern  
D1



Light blue, marble pattern  
DE 5123



Light brown, marble pattern  
DF 5128



Light yellow, marble pattern  
DE 5141



Green, marble pattern  
DE 2205



Red brown, marble pattern  
DE 2206



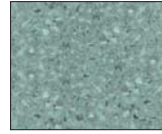
Light sand, marble pattern  
DTE 2244



Light grey, ceramic pattern  
DE-2407



Dark grey, ceramic pattern  
DF 5932



Turquoise, granite pattern  
DTE 2113



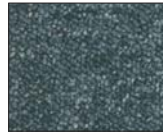
Brown, wood pattern  
DFW 5715



Orange, abstract pattern  
DE-2381



Red abstract pattern  
DE-2382



Dark blue, carpet pattern  
DE-5811



Light yellow, carpet pattern  
DS-5822



Red, carpet pattern  
DS-5810

## RUBBER



Black, coin-pattern  
N0702

## COMPOSITE STONE



Black-White stripe  
M1



Golden line cream  
M2



Red, sand pattern  
GS 032



Black, golden dotted  
210



Light, sand pattern  
RM 2080



White sand pattern  
RM 3010



Light grey sand pattern  
RM 3040



Light brown dotted  
RM 3060



Green, stone pattern  
RM 4050



Black, stone pattern  
RM 4060



Light cream stone pattern  
RM 5010

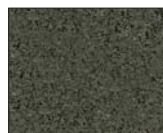


Brown, stone pattern  
RM 5040

## GRANITE STONE



Rose-black  
G1



Green-black  
G2



Red-black  
G3



Grey-black  
G4

The range of interior materials available varies depending on the elevator platform. Please check with your KONE sales representative.

# Ceilings and handrails



## CEILING



LF66E



LF67E



LF69



LF70



LF71



LF74



LF75



LF76



LF84



LF77AF



LF90

## HANDRAIL



Wooden type  
HR5



Rectangular, stainless  
steel  
HR24



Round, transparent type  
HR6



Round, matt aluminum  
HR50



Round, stainless  
steel D36  
HR51



Round, stainless  
steel D38  
HR41



Round, light  
wood  
HR41



Round, dark  
wood  
HR41

The range of interior materials available varies depending on the elevator platform. Please check with your KONE sales representative.