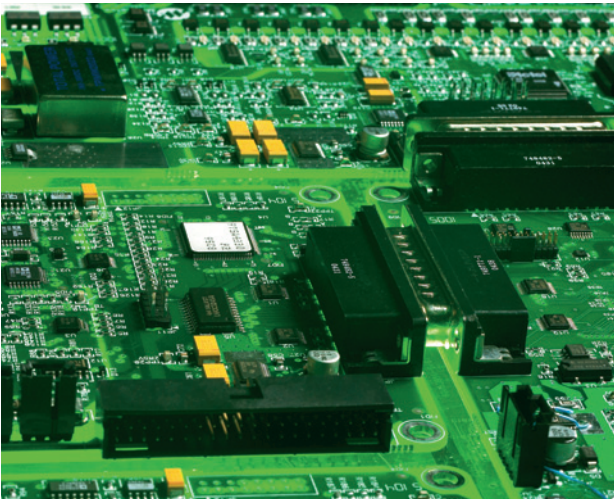


KONE RESOLVE™ 40

Modernization of elevator electrification

Improved performance

KONE ReSolve™ 40 is an electrification modernization solution for elevators in low- to mid-rise buildings. The KONE ReSolve 40 solution replaces obsolete relays and other electrical components, improving performance, safety and energy efficiency. The benefits of KONE ReSolve 40 are fast installation and delivery time and reduced disturbance during modernization for the customer and the users of the elevator.



Reduced consumption and accurate levelling

The KONE ReSolve™ 40 solution can be equipped with a Variable Voltage and Variable Frequency (V3F) drive system. This not only ensures smooth ride comfort and accurate levelling, it also provides considerable energy savings. In a typical application in a mid-rise residential building*, the energy savings can amount to about 30%.

*Speed 1.0 m/s, load 630 kg, 200,000 starts/year. The assumption includes updated signalization, LED lighting and car lighting with saving mode.

Key benefits

- Complete modernization package for electrification systems
- Replaces relay and microprocessor based control systems
- Suitable for traction and hydraulic drive systems
- Available with open loop drive control for speeds of less than 1m/s or closed loop where speeds exceed this or when greater floor levelling accuracy is required
- Plug and play configuration making the system easily expandable
- Suitable for use with either KONE KSS signalization or existing signalization

Eco-efficient

- Reduced energy consumption when using Variable Voltage Variable Frequency (V3F) drive control
- Reduced electricity consumption makes it possible to reduce fuse sizing

Safe and convenient

- Complies with EN81-80 (European Safety Standard)
- Complies with EN81-70 (European Accessibility Standard)
- Fast installation & delivery times reduce elevator downtime

Reliable

- Improves performance with modern electronics, single relay design
- Typical hoisting function lifetime 25 years, depending on elevator usage

For a wide range of elevators

KONE ReSolve™ 40 is designed for low to mid-rise applications, such as residential buildings, office buildings, hotels and hospitals. KONE ReSolve™ 40 can be installed on most types of traction or hydraulic elevators, whatever their origin, age and specifications.

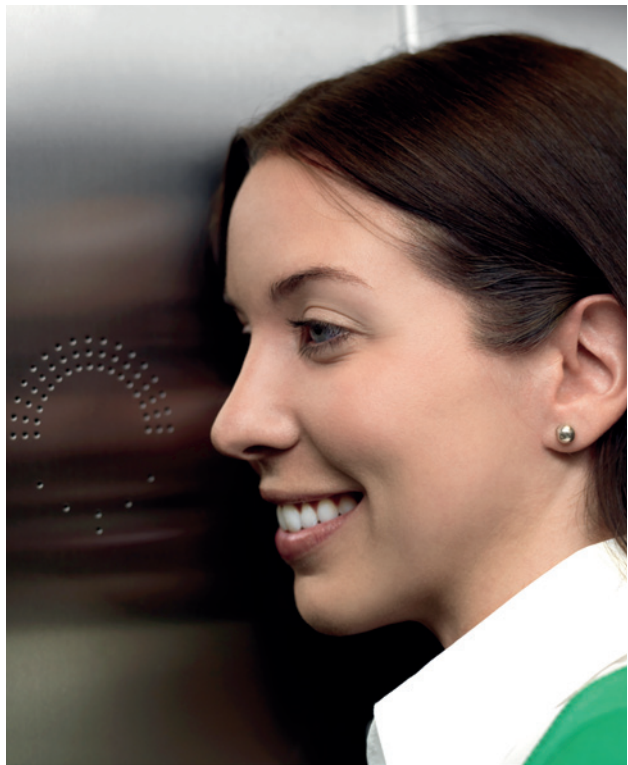
The standard KONE ReSolve™ 40 package includes:

- KONE ReSolve 40 control system
- Drive system
- Machine room wiring
- Shaft wiring
- Positioning and safety switches
- Interface units for existing door operator(s) and signalization devices
- KONE Remote Monitoring System for two-way communications to KONE Customer Care Center

KONE ReSolve™ 40	
Speed	0.15 - 1.78 m/s
Max. travel	90 m
Max. floors	32
Max elevators in group	6
Max. starts/h	180
Drive system (rope elevators)	2 speed
	Variable Voltage Variable Frequency (V3F)
	Open or closed loop control
Drive system (hydraulic)	3 or 4 valve solenoid control
	Electronic valve control



Our experienced modernization teams make sure the job is completed on time and on budget.



For the peace of mind of passengers, the KONE ReSolve 40 package includes two-way communications with the KONE Customer Care Center.

[For more information go to KONE.com](http://KONE.com)