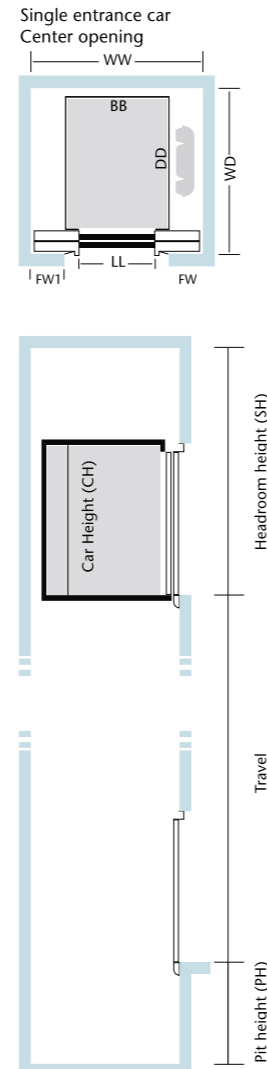


# General information

For shafts below the specified sizes please contact our sales person.  
 For maximum interior weight allowed for any decoration please contact our sales person.  
 Typically more interior weight is possible when travel is less for the same configuration.  
 All dimensions are final clear minimum dimensions over plaster.  
 All dimensions are in mm unless specified otherwise.  
 The relevant local regulation of the respective states are also to be considered.  
 Centre opening doors are preferred over side opening doors due to faster opening and symmetrical look to the lobby.



## Classic

Speed	1m/s	1.5,1.6m/s	1.8m/s	2m/s
Standard Car Inside Height (CH) mm	2200	2200	2200	2200
Standard Door Height (H) mm	2000	2000	2000	2000
Maximum Travel m	65	100	100	100
Standard Pit Height mm *	1500	1600	2000	2200
Standard Headroom Height mm *	CH+1950	CH+2300	CH+2500	CH+2700
West Bengal Headroom Height mm *	CH+2200	CH+2550	CH+2750	CH+2950

## MonoSpace

Speed	1m/s	1.5,1.6m/s	1.8m/s	2m/s
Standard Car Inside Height (CH) mm	2200	2200	2200	2200
Standard Door Height (H) mm	2000	2000	2000	2000
Maximum Travel m	60	90	90	90
Standard Pit Height upto 1150 kg mm*	1500	1600	2000	2200
Standard Pit Height above 1150 kg mm*	1800	1800	2000	2200
Standard Headroom Height mm *	CH+1900	CH+2300	CH+2500	CH+2700
West Bengal Headroom Height mm *	CH+2150	CH+2550	CH+2750	CH+2950

## S MiniSpace

Speed	1m/s	1.5,1.6m/s	1.8m/s	2m/s
Standard Car Inside Height (CH) mm	2200	2200	2200	2200
Standard Door Height (H) mm	2000	2000	2000	2000
Maximum Travel m	60	90	90	90
Standard Pit Height mm *	1500	1600	2000	2200
Standard Headroom Height mm *	CH+1900	CH+2300	CH+2500	CH+2700
West Bengal Headroom Height mm *	CH+2150	CH+2550	CH+2750	CH+2950

## MiniSpace

Speed	1m/s	1.5,1.6m/s	1.8m/s	2m/s	2.5m/s
Standard Car Inside Height (CH) mm	2200	2200	2200	2400	2400
Standard Door Height (H) mm	2000	2000	2000	2100	2100
Maximum Travel m	60	90	100	130	130
Standard Pit Height mm *	1500	1600	2000	2900	2900
Standard Headroom Height mm *	CH+1900	CH+2300	CH+2500	CH+2700	CH+2700
West Bengal Headroom Height mm *	CH+2150	CH+2550	CH+2750	CH+2950	CH+2950

\* For lesser Pit Height and Headroom solutions please contact our Sales person.



KONE MONOSPACE®, KONE MINISPACE™ AND KONE CLASSIC™

# KONE Planning Guide

Registered office and factory: Kone Elevator India Pvt Ltd  
 50-55 & 58, Vanagaram Road, Ayanambakkam, Chennai 600095  
 Tel 044 26533901 Fax 044 26533912

Contact Person : Phone number :

[www.kone.com](http://www.kone.com)

# Landing signalisation

## KDS 50



Double button:  
LCI 50 S2 / 7 segment  
LCI 50 S2 / Dotmatrix

Single button:  
LCI 50 S1 / 7 segment  
LCI 50 S1 / Dotmatrix

Display type 1



Double button:  
LCI 50 D2 / 7 segment  
LCI 50 D2 / Dotmatrix

Single button:  
LCI 50 D1 / 7 segment  
LCI 50 D1 / Dotmatrix

Display type 1



Double button:  
LCS 50 - 2

Single button:  
LCS 50 - 1



HI 50-B / Dotmatrix  
HI 50-B / 7 segment

Display type 2

- Button type: KDS 50 round surface mounted, Red
- S and D stand for Simplex, Duplex
- Full Collective uses two buttons & Down collective uses single button
- KDS 50 usage limited to simplex and duplex

## KDS 300



LCI 300 S2 / 7 segment - X  
LCI 300 S2 / Dotmatrix - X

LCI 300 S1 / 7 segment - X  
LCI 300 S1 / Dotmatrix - X

Display type 1



LCI 300 D2 / 7 segment - X  
LCI 300 D2 / Dotmatrix - X

LCI 300 D1 / 7 segment - X  
LCI 300 D1 / Dotmatrix - X

Display type 1



LCS 300 - 2 - X  
Double button

LCS 300 - 1 - X  
Single button

- S and D stand for Simplex, Duplex

### Button type & Indicator color – Table 1

Button Shape	Round							
	Red		White		Yellow		Blue	
Call registration & /or Indicator Color								
Button Mounting	Surface	Flush	Surface	Flush	Surface	Flush	Surface	Flush
Suffix (X)	1	2	3	4	5	6	7	8

Button Shape	Square							
	Red		White		Yellow		Blue	
Call registration & /or Indicator Color								
Button Mounting	Surface	Flush	Surface	Flush	Surface	Flush	Surface	Flush
Suffix (X)	9	10	11	12	13	14	15	16



HL 300 R - A



HL 300 S - A



HI 300 Dotmatrix - Z  
HI 300 7 Segment - Z  
Display type 2



HLI 300 Dotmatrix - Z  
HLI 300 7 Segment - Z  
Display type 2

### Lantern Illumination - Table 2

Color	Red	White	Blue	Green UP & Red DOWN
Suffix (A)	1	3	7	20

### Indicator color - Table 3

Color	Red	White	Yellow	Blue
Suffix (Z)	1	3	5	7

KDS 300 faceplates are normally hairline finish with buttons also with hairline finish. However KDS 300 LCI, LCS, HL, HI and HLI can be provided with following options for special requirement.

- Gold HL - Gold hairline faceplate, with gold HL button finish.
- Gold Mirror - Gold mirror faceplate, with gold mirror button finish.
- SS Mirror - SS mirror faceplate, with SS mirror button finish.

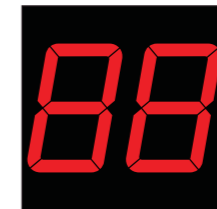
### Display type 1



7 segment



Dotmatrix



7 segment



Dotmatrix

### Specials



LCDM - L Mono Chrome LCD Display  
(For Landing) (Display Size: 150 mm diagonal)



Epsilon Full Color Display - FCD  
(For Car only) (Display Size: 260 mm diagonal)



Special Digital Display - SDD-B  
(Display Length: 424 mm  
Typical Character Height: 60 mm)

- Suffix B - 1 = Red digit and arrows
- 5 = Yellow digit and arrows
- 30 = Yellow digit with red and green arrows

# Car signalisation



LCD (LCDM)



CI 300 / Dotmatrix - Z  
CI 300 / 7 segment - Z

SUFFIX AS PER TABLE – 3



KEI COP RPH  
Button type: KDS 50 round surface mounted, Red



KDS 300 COP PH - X  
(Partial height)

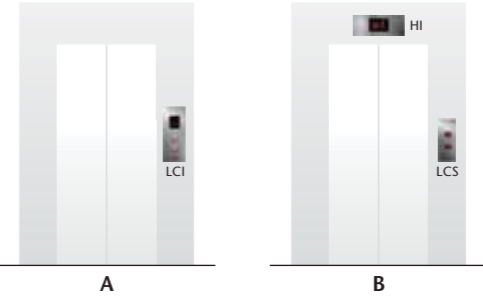


KDS 300 COP FH - X  
(Full height)

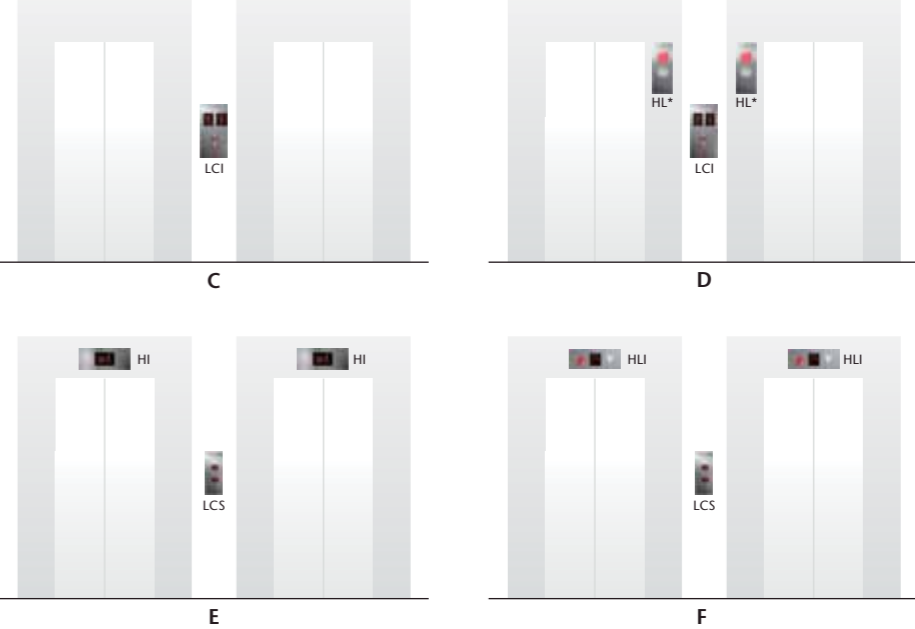
SUFFIX AS PER TABLE – 1

# Landing Signal Configurations

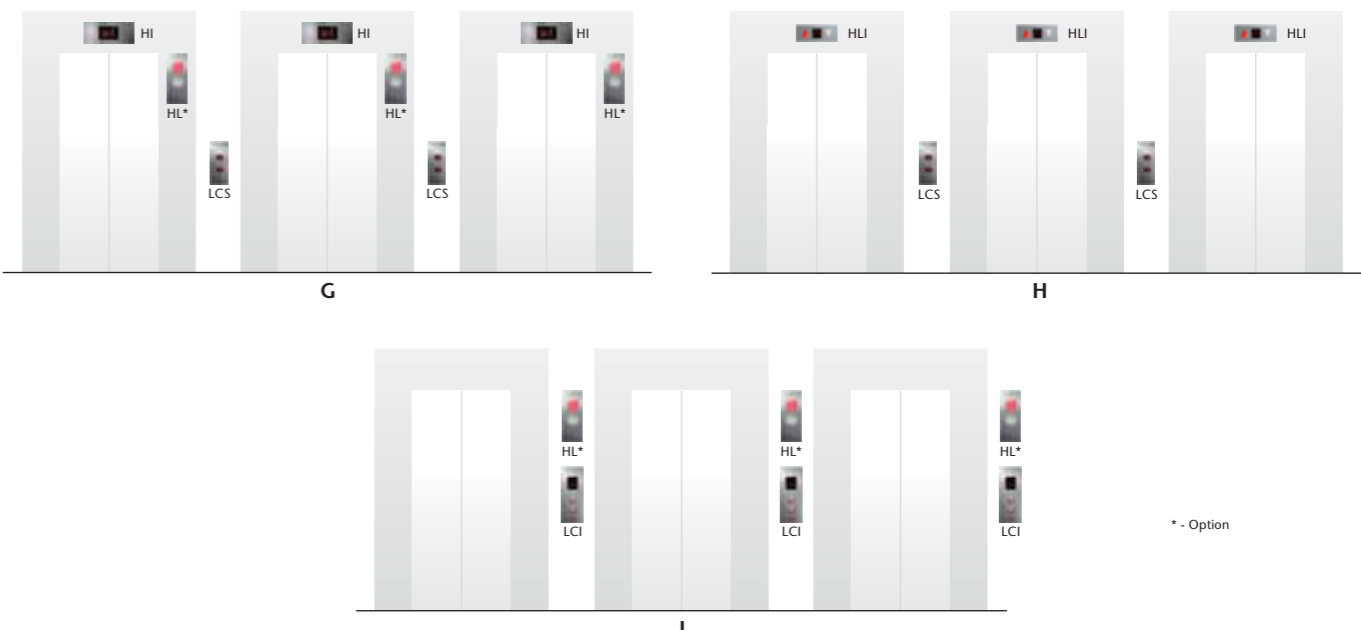
## Simplex



## Duplex



## Triplex



\* - Option

Button types



Round Surface Mounted (KDS 50)



Round Surface Mounted (KDS 300)



Round Flush Mounted (KDS 300)



Round Surface Mounted (KDS 300 - Gold Brushed)



Round Surface Mounted (KDS 300 - Gold Mirror)



Round Surface Mounted (KDS 300 - Mirror SS)



Square Surface Mounted (KDS 300)



Square Flush mounted (KDS 300)



\* Braille Option Available

Mirror

Partial height / full width - Plain mirror



M1

Partial height / partial width - Thin frame



M2A - Painted Red



M2B - SS Hairline



M2C - SS Golden Hairline



M2D - Painted Black

Full height / partial width - Wide frame



M3A - Painted Red



M3B - SS Hairline



M3C - SS Golden Hairline



M3D - Dark Wood

Paints



Ruby Red (RR12)



Traffic Black (TB13)

# Decoration

## Walls

### Painted



Silver Grey  
SG1 - SG



Saffron Yellow  
SY2 - SG / SY2 - MM



Coral Red  
CR3 - SG / CR3 - MM



Reed Green  
RG4 - SG / RG4 - MM



Pigeon Blue  
PBS - SG



Brilliant Blue  
BB6 - SG / BB6 - MM



Metallic Pearl Orange  
MPO7 - MG



Metallic Pearl Beige  
MPB8 - MG



Metallic Pearl Gold  
MPG9 - MG



Metallic Pearl Gentian Blue  
MPG B10 - MG

## Glass



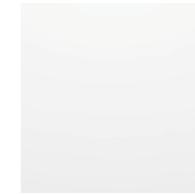
GLx9P Spring  
Vivid Orange - P1



GLx9P Summer  
Cool Blue - P2



GLx9P Monsoon  
Creamy Beige - P3



GLx9P Winter  
Silky White - P4



GLx9E Spring  
Paradise Lily in Vivid  
Orange - E1



GLx9E Summer  
Paradise Lily in Cool  
Blue - E2



GLx9E Monsoon  
Crystal Garden in  
Creamy Beige - E3



GLx9E Winter  
Crystal Garden in  
Silky White - E4

SG = Semi Glossy, MM= Metallic Matt, MG= Metallic Glossy. All paints are Semi Glossy expect where specified.

## Stainless Steel



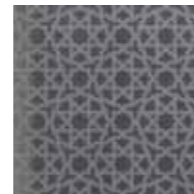
Copper Contours  
176M  
(Mirror Etched)



Grass Glass  
199-2M  
(Mirror Etched)



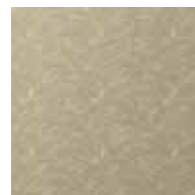
Lemon Whirls  
138M  
(Mirror Etched)



Pearl Strings  
126M  
(Mirror Etched)



Ivy Art  
154H  
(Hairline Etched)



Golden Streaks  
199-2H  
(Hairline Etched)



Silver Stars  
126H  
(Hairline Etched)



Merry Weaves  
115H  
(Hairline Etched)



SS Hairline No:4  
(SSH)



SS Mirror No:8  
(SSM)

## Floors

### PVC



Light brown  
wood pattern (PLBW)



Dark brown  
wood pattern (PDBW)



Dark Grey  
Marble pattern (PDGM)

### Stone



Jet Black Granite  
(JBG)



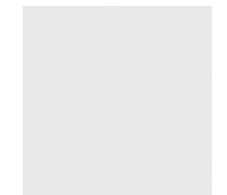
Red Stone  
(RS)



Grey Stone  
(GS)



Black Stone  
(BS)



White Artificial  
Granite Stone (WAG)

Ceilings



CT002 (Finish - CW11)



CT003 (Finish - SSH)



CT004 (Finish - SSH)



CT005 (Finish - SG1-SG)



CT006 (Finish - SSM) & CT007 (Finish - SSH)

Number of Lights and Fan(s) will vary depending on car size.



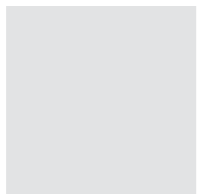
CT008 (Finish - GLS)<sup>+</sup>

<sup>+</sup>Glass Ceiling is available only on specific high end models.

Finish



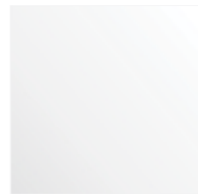
SS Hairline No:4 (SSH)



Painted - Casablanca white (CW11)



Mirror Polish Stainless Steel No:8 (SSM)



Glass (GLS)

DCS Fixtures



Elevator Identifier (EI)

Full DCS



Full colour LCD display (LCDC)  
(Car Position or Destination Indicator)

Full DCS



DCS-COP FH



Standard Destination Operating Panel (DOP1)



Full Colour LCD DOP (DOP2\*)

\* Available as Pedestal Mounted or Surface Mounted on the wall

Destination Control System (DCS) is selected based on traffic calculation and study of people flow in buildings. Please refer KONE Polaris™ catalogue for details.

# Accessories

## Handrails



Painted Silver Grey round tubular (HR41-01)



Painted Traffic Black round tubular (HR41-02)



SS Hairline round tubular (HR41-03)



SS Gold Hairline round tubular (HR41-04)



Solid Dark Wood Round (HR41-05)

## Light



CFL Bulb with reflector Direct light (LD1)



Frosted glass CFL Direct light (LD2)



Spot light (LS3)



Square LED Spot Light (LS4)



Flourescent Tube Light (LF5)

## Fan



Axial flow fan -Round (Strong Air flow)  
Air flow 1000 Cu.M /Hour (FN1)



Axial flow fan - Round (Strong Air flow)  
Air flow 1340 Cu.M/ Hour (FN2)



Square Grill diffuser (SGD1)



Round Black diffuser (RBD2)



Cross flow rectangular (Low noise/Mild Air flow)  
Air flow 270 Cu.M/Hour (FN3)

There could be differences in actual materials from those seen here due to printing limitations. Samples can be provided. Floor materials and wooden parts shown here are examples and the materials delivered will be subject to availability and will be chosen to maintain design integrity. Kone reserves the right to make changes in design in the future due to continuous development.

# Features

Feature	Category	Abbreviation	Feature	Products		
				Classic	MonoSpace	MiniSpace
Safety Features	Rescue and Failure detection operation	EBD A	Emergency Battery Drive, Automatic (ARD)	O	O	O
	Operation during standby power	EPD	Emergency power Drive (Sequencer)	O	O	O
		CEL E	Car emergency lighting	S	S	S
	Precautions for Special emergencies	EAQ	Earthquake mode of operation	O	O	O
		FRD	Fireman's Drive	S	S	S
		COD	Correction drive to next level	S	S	S
	Means of Emergency communication	ABE M	Alarm bell	S	S	S
		ISE C	Emergency intercom car-machine room-control room	O	O	O
		ISE S	EPABX based intercom for group of elevators	O	O	O
Passenger comfort Feature	Entering and Exiting	DCB	Door close button	O	O	O
		DOB	Door open button	S	S	S
		QCC	Quick close for new car call	S(FS)	S(FS)	S(FS)
		NUD	Nudging	O	O	O
		REO	Reopen by landing call in lift group, one time	S(FS)	S(FS)	S(FS)
		DOE	Extended door open time	O	O	O
		SRC	Light curtain in car	S	S	S
		ADO	Advance Door opening	OL	O	O
		ACL B	Accurate releveling, automatic, both open and closed doors	OL	O	O
		ACL C	Accurate releveling, automatic, closed doors	OL	O	O
		CCB	Car call backwards	S(FS)	S(FS)	S(FS)
		OCL	Operation of car light, automatic	S(FS)	S(FS)	S(FS)
		OCV	Operation of car ventilation, automatic	S(FS)	S(FS)	S(FS)
	Security Features	Anti-burglary	LOC E	Locking of car calls, reopen devices inoperative in closed doors	O	O
		LOC O	Locking of car calls, reopen devices operate normally	O	O	O
		LOL O	Locking of landing calls, reopen devices operate normally	O	O	O

S:Standard ; S(FS)-Standard Field Selectable ; O-option ; OL-Option with Limitation (Typically not available for 1m/s); G-Group feature

# Features

Feature	Category	Abbreviation	Feature	Products			
				Classic	MonoSpace	MiniSpace	
Features		FCC C	False car call canceling (Light curtain monitor)	S(FS)	S(FS)	S(FS)	
		FCC R	False car call canceling (by pressing button again)	O	O	O	
		OSS	Out of service switch at landing, doors closed, lights off	OL	O	O	
		OSS MC	Out of service switch -Remote	OL	O	O	
		PRC	Priority call with key switch in car	O	O	O	
		PRL	Priority call with key switch in landing	O	O	O	
		ATS	Attendant service	O	O	O	
		TTC	Through type car	O	O	O	
		PAM	Parking at Main floor, doors closed	G	G	G	
		PAD	Parking at pre-defined floor, doors closed	G	G	G	
		PAS	Parking at secondary floors, doors closed	G	G	G	
		BLF	Bypass load function	O	S(FS)	S(FS)	
		IDP	Intensive down peak	G	G	G	
		ITP	Intensive two-way peak	G	G	G	
		IUP	Intensive UP-peak	G	G	G	
		ESP	Enhanced spacing principle	G	G	G	
		GA	Genetic Algorithm	O	O	O	
	Information Features	Information to passengers at landing	GOL	Acoustic device for arrival at landing	O	O	O
			LAL	Lanterns at landing	O	O	O
			OLF	Over load function, constant indication/ buzzer	O	S	S
Information to passengers in car		CRB	Car call registered buzzer	O	O	O	
		ACU	Lift Announcer ( LAS)	O	O	O	
Information for Supervision		LIL AM	Lift link, Alarm, mode signals (BMS)	O	O	O	
		LIL AMB	Lift link, Alarm, mode, position	O	O	O	
	KONE E-link™	Elevator Monitoring and command system	O	O	O		

S:Standard ; S(FS)-Standard Field Selectable ; O-option ; OL-Option with Limitation(Typically not available for 1m/s) ; G-Group feature

## Dimensions – Classic Geared Speed: 1.0m/s, 1.5m/s & 1.6m/s

Persons/Load (kg)	Car size BBxDD		Door opening	Well Size for Centre Opening doors		Well Size for Side Opening doors		Note	
	BB	DD	LL	WW	WD	WW	WD		
4 / 272	900	850	700	1600	1450	1475	1550		
			800	1800	1450	1575	1550		
	1100	700	700	1600	1300	1575	1400		1,2
			800	1800	1300	1675	1400		1,2
5 / 340	950	1000	700	1600	1600	1500	1700		
			800	1800	1600	1600	1700		
	1100	850	700	1600	1450	1575	1550		1
			800	1800	1450	1675	1550		1
	1200	800	700	1650	1400	-	-		
			800	1800	1400	1725	1500		
6 / 408	950	1200	700	1600	1800	1500	1900		
			800	1800	1800	1600	1900		
	1000	1100	700	1600	1700	1525	1800		
			800	1800	1700	1625	1800		
	1200	900	700	1650	1500	-	-		
			800	1800	1500	1725	1600		
	1100	1000	700	1600	1600	1575	1700		1
			800	1800	1600	1675	1700		1
8 / 544	1100	1300	700	1600	1900	1575	2000		
			800	1800	1900	1675	2000		
	1300	1100	700	1750	1700	-	-		1
			800	1800	1700	1775	1800		1
10 / 680	1300	1350	700	1750	1950	-	-	1	
			800	1800	1950	1775	2050	1	
	1350	1300	700	1800	1900	-	-		
			800	1800	1900	-	-		
	1100	1600	700	1850	2075	1825	2175		
			800	1950	2075	1825	2175		
	1000	1800	700	1800	2275	1725	2375		
			800	1900	2275	1725	2375		
13 / 884	1600	1400	900	2100	2075	-	-		
			1000	2200	2075	-	-		
	1100	2000	800	2000	2475	1900	2575		
			900	2075	2475	1900	2575		
	2000	1100	1000	2200	2475	1900	2575		
			900	2550	1800	-	-		1
	1500	1500	1000	2550	1800	-	-		1
			900	2000	2175	1975	2275		
1000	2200	1000	2200	2175	2075	2275			
		900	2150	2225	-	-			
15 / 1020	1600	1550	1000	2200	2225	2150	2325		
			900	2150	2225	-	-		

## Dimensions – Classic Geared Speed: 1.0m/s, 1.5m/s & 1.6m/s

Persons/Load (kg)	Car size BBxDD		Door opening	Well Size for Centre Opening doors		Well Size for Side Opening doors		Note	
	BB	DD	LL	WW	WD	WW	WD		
16 / 1088	1800	1450	900	2350	2125	-	-		
			1000	2350	2125	-	-		
			1100	2400	2125	-	-		
	2000	1300	900	2550	1975	-	-		1
			1000	2550	1975	-	-		1
			1100	2550	1975	-	-		1
	1300	2000	900	2175	2475	2125	2575		
			1000	2275	2475	2125	2575		
			1100	2425	2475	2125	2575		
	1600	1600	900	2150	2275	-	-		
			1000	2200	2275	2150	2375		
	17 / 1156	1800	1500	900	2350	2175	-		-
1000				2350	2175	-	-		
1100				2400	2175	2350	2275		
20 / 1360	1800	1700	900	2350	2375	-	-		
			1000	2300	2375	-	-		
			1100	2400	2375	2350	2475		
	1700	1800	900	2250	2475	-	-		
			1000	2250	2475	-	-		
	2000	1550	1000	2550	2225	-	-		1
			1100	2550	2225	-	-		1
			900	2450	2325	-	-		
1900	1650	1000	2450	2325	-	-			
		1100	2450	2325	-	-			
		900	2225	2875	2125	2975			
1300	2400	1000	2325	2875	2125	2975			
		1100	2425	2875	2175	2975			
		1000	2350	2475	-	-			
21 / 1428	1800	1800	1100	2400	2475	2350	2575		
			1200	2600	2475	2450	2575		
			1000	2350	2575	-	-		
22 / 1496	1800	1900	1100	2400	2575	2350	2675		
			1200	2600	2575	2450	2675		
			1000	2450	2575	-	-		
24 / 1632	1900	1900	1100	2450	2575	-	-		
			1200	2600	2575	2500	2675		
			1000	2450	2675	-	-		
26 / 1768	1900	2000	1100	2450	2675	-	-		
			1200	2600	2675	2500	2775		
	1600	2400	1000	2550	2875	2450	2975		
			1100	2575	2875	2450	2975		
	1200	2675	1000	2675	2875	2450	2975		
			1100	2675	2875	2450	2975		

**Note :**  
 1. IS car size  
 2. Only available for 1m/s speed

## Dimensions – Classic Geared Speed: 1.8m/s & 2.0m/s

Persons/Load	Car size BBxDD		Door opening	Well Size for Centre Opening doors		Well Size for Side Opening doors		Note
	BB	DD	LL	WW	WD	WW	WD	
4 / 272	900	850	700	1600	1450	1475	1550	
			800	1800	1450	1575	1550	
5 / 340	950	1000	700	1600	1600	1500	1700	
			800	1800	1600	1600	1700	
	1100	850	700	1600	1450	1575	1550	1
			800	1800	1450	1675	1550	1
	1200	800	700	1650	1400	-	-	
			800	1800	1400	1725	1500	
6/408	950	1200	700	1600	1800	1500	1900	
			800	1800	1800	1600	1900	
	1000	1100	700	1600	1700	1525	1800	
			800	1800	1700	1625	1800	
	1200	900	700	1650	1500	-	-	
			800	1800	1500	1725	1600	
1100	1000	700	1600	1600	1575	1700	1	
		800	1800	1600	1675	1700	1	
8/544	1100	1300	700	1600	1900	1575	2000	
			800	1800	1900	1675	2000	
	1300	1100	700	1750	1700	-	-	1
			800	1800	1700	1775	1800	1
10/680	1300	1350	700	1750	1950	-	-	1
			800	1800	1950	1775	2050	1
	1350	1300	700	1800	1900	-	-	
			800	1800	1900	-	-	
	1100	1600	700	1850	2075	1825	2175	
			800	1950	2075	1825	2175	
1000	1800	700	1800	2275	1725	2375		
		800	1900	2275	1725	2375		
13/884	1600	1400	900	2100	2025	-	-	
			1000	2200	2025	-	-	
	1100	2000	800	2000	2475	1900	2575	
			900	2075	2475	1900	2575	
	2000	1100	1000	2200	2475	1900	2575	
			900	2550	1735	-	-	1
1500	1500	1000	2550	1735	-	-	1	
		900	2000	2125	1975	2225		
15/1020	1600	1550	1000	2200	2125	2100	2225	
			900	2150	2125	-	-	
			1000	2200	2125	2150	2225	

## Dimensions – Classic Geared Speed: 1.8m/s & 2.0m/s

Persons/Load	Car size BBxDD		Door opening	Well Size for Centre Opening doors		Well Size for Side Opening doors		Note
	BB	DD	LL	WW	WD	WW	WD	
16/1088	1800	1450	900	2350	2025	-	-	
			1000	2350	2025	-	-	
			1100	2400	2025	-	-	
	2000	1300	900	2550	1875	-	-	1
			1000	2550	1875	-	-	1
			1100	2550	1875	-	-	1
	1300	2000	900	2175	2475	2125	2575	
			1000	2275	2475	2125	2575	
			1100	2425	2475	2125	2575	
	1600	1600	900	2150	2175	-	-	
			1000	2200	2175	2150	2275	
	17/1156	1800	1500	900	2350	2075	-	-
1000				2350	2075	-	-	
1100				2400	2075	2350	2175	
20/1360	1800	1700	900	2350	2275	-	-	
			1000	2300	2275	-	-	
			1100	2400	2275	2350	2375	
	1700	1800	900	2250	2375	-	-	
			1000	2250	2375	-	-	
			1100	2400	2375	2300	2475	
2000	1550	1000	2550	2125	-	-	1	
		1100	2550	2125	-	-	1	
		1000	2450	2225	-	-		
1900	1650	1100	2450	2225	-	-		
		900	2225	2875	2125	2975		
		1000	2325	2875	2125	2975		
1300	2400	1100	2425	2875	2175	2975		
		1000	2350	2475	-	-		
		1100	2400	2475	2350	2575		
21/1428	1800	1800	1000	2350	2475	-	-	
			1100	2400	2475	2350	2575	
			1200	2600	2475	2450	2575	
22/1496	1800	1900	1000	2350	2575	-	-	
			1100	2400	2575	2350	2675	
24/1632	1900	1900	1200	2600	2575	2450	2675	
			1000	2450	2575	-	-	
26/1768	1900	2000	1100	2450	2675	-	-	
			1200	2600	2675	2500	2675	
			1000	2450	2675	-	-	
	1600	2400	1200	2600	2675	2500	2775	
			1000	2550	2875	2450	2975	
			1100	2575	2875	2450	2975	
			1200	2675	2875	2450	2975	

Note :  
1. IS car size

## Dimensions – MonoSpace Speed: 1.0m/s, 1.5m/s, 1.6m/s, 1.8m/s, 2 m/s

Persons/Load (kg)	Car size BBxDD		Door opening	Well Size for Centre Opening doors		Well Size for Side Opening doors		Note
	BB	DD	LL	WW	WD	WW	WD	
4 / 272	900	850	700	1600	1550	1550	1650	2
			800	1750	1550	1600	1650	2
5 / 340	950	1000	700	1625	1625	1600	1725	2
			800	1750	1625	1625	1725	2
6/408	950	1200	700	1625	1725	1600	1825	2
			800	1750	1725	1625	1825	2
	1000	1100	700	1650	1675	-	-	2
			800	1750	1675	1650	1775	2
	1200	900	700	1850	1575	-	-	2
			800	1850	1575	-	-	2
	1100	1000	700	1750	1625	-	-	1
			800	1800	1625	1750	1725	1
8/544	1100	1300	700	1750	1775	-	-	2
			800	1800	1775	1750	1875	2
			700	1750	1900	-	-	3
			800	1800	1900	1750	2000	3
	1300	1100	800	1950	1675	-	-	1,2
			800	1950	1800	-	-	1,3
10/680	1300	1350	800	1950	1925	-	-	1
	1350	1300	800	2000	1900	-	-	
	1100	1600	800	1800	2050	1750	2150	
	1000	1800	800	1800	2225	1750	2325	
13/884	1600	1400	900	2250	1950	-	-	
			1000	2250	1950	-	-	
	1100	2000	800	1800	2425	1750	2525	
			900	1950	2425	1800	2525	
	1500	1500	900	2150	2000	-	-	
			1000	2200	2000	2150	2100	
15/1020	1600	1550	900	2250	2025	-	-	
			1000	2250	2025	-	-	
16/1088	1800	1450	1000	2475	2000	-	-	
			1100	2475	2000	-	-	
	1300	2000	1000	2150	2425	2000	2525	
17/1156	1800	1500	1000	2275	2075	-	-	
			1000	2475	2025	-	-	
20/1360	1800	1700	1000	2475	2025	-	-	
			1100	2475	2025	-	-	
	1700	1800	1000	2700	2250	-	-	
			1100	2700	2250	-	-	
	2000	1550	1000	2600	2300	-	-	
			1100	2600	2300	-	-	
	1900	1650	1000	2900	2175	-	-	1
			1100	2900	2175	-	-	1
21/1428	1800	1800	1000	2800	2225	-	-	
			1100	2800	2225	-	-	
21/1428	1800	1800	1000	2250	2825	2200	2925	1
			1000	2700	2300	-	-	
21/1428	1800	1800	1000	2700	2300	-	-	
			1100	2700	2300	-	-	

## Dimensions – MonoSpace Speed: 1.0m/s, 1.5m/s, 1.6m/s, 1.8m/s, 2 m/s

Persons/Load (kg)	Car size BBxDD		Door opening	Well Size for Centre Opening doors		Well Size for Side Opening doors		Note
	BB	DD	LL	WW	WD	WW	WD	
22/1496	1800	1900	1000	2700	2350	-	-	
			1100	2700	2350	-	-	
24/1632	1900	1900	1000	2800	2350	-	-	
			1100	2800	2350	-	-	
26/1768	1900	2000	1000	2800	2425	-	-	
			1100	2800	2425	-	-	
	1600	2400	1000	2500	2825	-	-	1
			1100	2500	2825	-	-	1

**Note**

1. IS Car size
2. Only available for 1m/s
3. Only available for 1.5m/s, 1.6m/s, 1.8m/s & 2m/s

## Dimensions – S MiniSpace Speed: 1m/s, 1.5m/s, 1.6m/s, 1.8m/s & 2m/s

Persons/Load (kg)	Car size BBxDD		Door opening	Well Size for Centre Opening doors		Well Size for Side Opening doors		Note
	BB	DD	LL	WW	WD	WW	WD	
8/544	1100	1300	700	1750	1775	-	-	
			800	1800	1775	1750	1875	
10/680	1300	1100	800	1950	1675	-	-	1
			800	1950	1675	-	-	1
	1350	1300	800	2000	1900	-	-	
			800	1800	2050	1750	2150	
13/884	1600	1400	900	2250	1950	-	-	
			1000	2250	1950	-	-	
	1100	2000	800	1800	2425	1750	2525	
			900	1950	2425	1800	2525	
	1500	1500	900	2150	2000	-	-	
			1000	2200	2000	2150	2100	
15/1020	1600	1550	900	2250	2025	-	-	
			1000	2250	2025	-	-	
16/1088	1800	1450	1000	2475	2000	-	-	
			1100	2475	2000	-	-	
	1300	2000	1000	2150	2425	2000	2525	
			1000	2275	2075	-	-	
17/1156	1800	1500	1000	2475	2025	-	-	
			1100	2475	2025	-	-	
20/1360	1800	1700	1000	2700	2250	-	-	
			1100	2700	2250	-	-	
	1700	1800	1000	2600	2300	-	-	
			1100	2600	2300	-	-	
	2000	1550	1000	2900	2175	-	-	1
			1100	2900	2175	-	-	1
1900	1650	1000	2800	2225	-	-		
		1100	2800	2225	-	-		
21/1428	1800	1800	1000	2250	2825	2200	2925	1
			1000	2700	2300	-	-	
21/1428	1800	1800	1000	2700	2300	-	-	
			1100	2700	2300	-	-	

**Note:**

1. IS Car Size

## Dimensions – MiniSpace Speed: 1.0m/s ,1.5 m/s, 1.6 m/s, 1.8 m/s, 2.0 & 2.5m/s

Persons/Load	Car size BBxDD		Door opening	Well Size for Centre Opening doors		Well Size for Side Opening doors		Note
	BB	DD	LL	WW	WD	WW	WD	
8/544	1100	1300	700	1775	2000	-	-	1
			800	1775	2000	-	-	
	1300	1100	700	1975	1800	-	-	
			800	1975	1800	-	-	
10/680	1300	1350	800	1975	2050	-	-	1
			800	2025	2000	-	-	
	1100	1600	700	1775	2300	-	-	
			800	1775	2300	-	-	
1000	1800	800	1750	2500	1725	2600		
13/884	1600	1400	900	2275	2100	-	-	1
			1000	2275	2100	-	-	
	1100	2000	800	2025	2425	-	-	
			900	2125	2425	-	-	
	2000	1100	900	2675	1800	-	-	
			1000	2675	1800	-	-	
1500	1500	900	2175	2200	-	-		
		1000	2175	2200	-	-		
15/1020	1600	1550	900	2275	2250	-	-	
			1000	2275	2250	-	-	
16/1088	1800	1450	900	2475	2150	-	-	1
			1000	2475	2150	-	-	
			1100	2475	2150	-	-	
	2000	1300	900	2675	2000	-	-	
			1000	2675	2000	-	-	
			1100	2675	2000	-	-	
	1300	2000	900	2225	2425	-	-	
			1000	2325	2425	-	-	
			1100	2425	2425	-	-	
			900	2275	2300	-	-	
1600	1600	1000	2275	2300	-	-		
		900	2275	2300	-	-		
17/1156	1800	1500	900	2475	2200	-	-	
			1000	2475	2200	-	-	
			1100	2475	2200	-	-	
20/1360	1800	1700	1000	2475	2400	-	-	1
			1100	2475	2400	-	-	
	1700	1800	1000	2375	2500	-	-	
			1100	2375	2500	-	-	
	2000	1550	1000	2675	2250	-	-	
			1100	2675	2250	-	-	
	1900	1650	1000	2575	2350	-	-	
			1100	2575	2350	-	-	
1300	2400	1000	2325	2825	-	-		
		1100	2425	2825	-	-		
21/1428	1800	1800	1000	2525	2500	-	-	1
			1100	2525	2500	-	-	
			1200	2550	2500	-	-	
	2000	1650	1000	2725	2350	-	-	
			1100	2725	2350	-	-	
1200	2725	2350	-	-				

## Dimensions – MiniSpace Speed: 1.0m/s ,1.5 m/s, 1.6 m/s, 1.8 m/s, 2.0 & 2.5m/s

Persons/Load	Car size BBxDD		Door opening	Well Size for Centre Opening doors		Well Size for Side Opening doors		Note
	BB	DD	LL	WW	WD	WW	WD	
22/1496	1800	1900	1000	2775	2325	-	-	1
			1100	2775	2325	-	-	
			1200	2800	2325	-	-	
	2000	1700	1100	2725	2400	-	-	
			1100	2725	2400	-	-	
			1200	2725	2400	-	-	
24/1632	1900	1900	1100	2875	2325	-	-	
			1200	2875	2325	-	-	
	2000	1800	1100	2725	2500	-	-	
26/1768	1900	2000	1200	2675	2500	-	-	1
			1100	2875	2425	-	-	
	1600	2400	1000	2575	2825	-	-	
			1100	2600	2825	-	-	
1200	2700	2825	-	-				

Note:  
1. IS Car Size